

LABELING & IDENTIFICATION

Labeling Software	255
Standard Labels for Outlets	255
Label Covers for Faceplates	256
Universal Labels	256
Labels for Patch Panels	257
Label Covers for Patch Panels	257
Labels for Cross-Connect Wiring Blocks	258
Label Holders for Cross-Connect Wiring Blocks	258
Labels for Cables and Cable Assemblies	259
Icon Wheels	259

Chapter Summary

- Labeling Software
 - TIA/EIA-606-A compliant
 - Microsoft® Windows® compatible
 - Context-sensitive help
 - Label templates specifically for AMP NETCONNECT cabling products
 - User-friendly wizard helps create identifiers with up to 12 independent elements
- Labels
 - 8.5" x 11" Sheet format
 - High-quality card stock and self-adhesive polyester
 - Compatible with most printers
 - Pre-cut and perforated for faceplates, patch panels, cross-connects and cable



Labeling & Identification Information

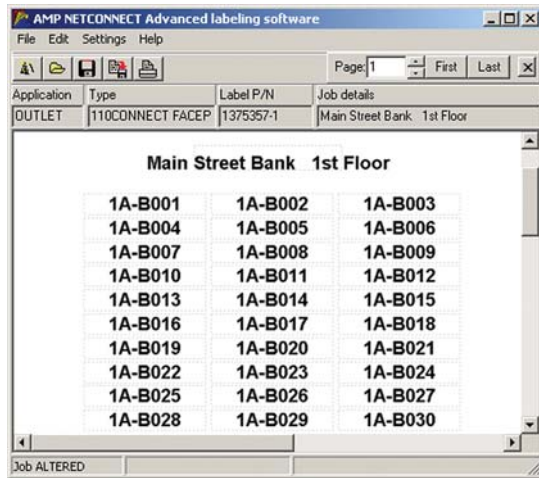
Faceplate/Outlet and Label Compatibility List

		Card Stock 1375356	Self-adhesive Polyester 1375357	Label Cover 1375345	Label Cover 1479268	Self-adhesive Polyester 1375358	Self-adhesive Polyester 1375353
SL Series Modules (Chapter 3)	1116406	–	–	–	–	X	–
	1116408	–	–	–	–	X	–
	1339118	X	X	X	X	–	–
SL Series Faceplates (Chapter 3)	1339119	–	X	–	–	–	–
	1479486	X	X	X	X	–	–
	557505	X	X	X	X	–	–
Standard Faceplates (Chapter 3)	557502	X	X	X	X	–	–
	558088	X	X	X	X	–	–
	83935	X	X	X	X	–	–
	557691	X	X	X	X	–	–
	83936	X	X	X	X	–	–
	558086	X	X	X	X	–	–
	1375155	X	X	X	X	–	–
Angled Faceplates (Chapter 3)	406185	X	X	X	X	–	–
	503999	–	–	–	–	–	X
HIDEOUT Outlet (Chapter 3)	503997	–	–	–	–	–	X
	503998	–	–	–	–	–	X
	1479815	X	X	X	X	–	–
HIDEAWAY Multimedia Outlets (Chapter 3)	1479946	X	X	X	X	–	–
Multimedia Security Outlet (Chapter 3)	1116535	–	–	–	–	–	–
Surface Mount Outlet (Chapter 3)	557366	–	–	–	–	–	–
Surface Mount Outlet Accessories (Chapter 3)	1116098	–	–	–	–	–	–
	557775	–	–	–	–	–	–
Universal Office Boxes (Chapter 3)	1479488	–	–	–	–	–	X
	1479489	–	–	–	–	–	X
	1479490	–	–	–	–	–	X
12-Port Universal Office Box (Chapter 3)	1479358	X	X	X	X	–	–
Modular Jack Boxes (Chapter 3)	1116697	–	–	–	–	X	–
	1116698	–	–	–	–	X	–
WIREMOLD Raceway Faceplates (Chapter 3)	1375050	X	X	X	X	–	–
	1375049	X	X	X	X	–	–
SL Series Furniture Outlets (Chapter 3)	1375005	–	–	–	–	X	–
	1375006	–	–	–	–	X	–

AMP NETCONNECT Labeling Software

**VISIT WWW.AMPNETCONNECT.COM/LABELING TO
DOWNLOAD A FREE 30-DAY TRIAL COPY!**

**VISIT WWW.AMPNETCONNECT.COM/LABELING AND
CLICK THE "CLICK HERE TO BUY" BUTTON TO ORDER
SOFTWARE FROM SILVER FOX, LTD!**



Product Facts

- Compatible with Windows 95, 98, 2000, Windows NT and Windows XP operating systems
- Flexible build option to produce more complex alphanumeric identifiers
- Create identifiers consisting of up to 12 independent segments
- Can cope easily with the TIA/EIA-606-A standard identification sequences
- Insert symbols (all standard Windows symbols can be used)
- Save and edit builds
- Fine tune adjustment
- Split your label format as required
- Job notepad facility for builds saved to file
- Justify text
- Adjust font style and size
- Context-sensitive help

Standard Labels for Outlets



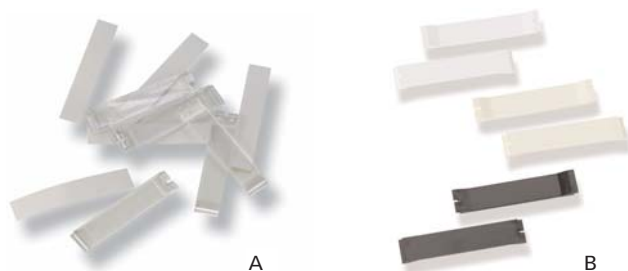
Product Facts

- Labels are designed to fit AMP NETCONNECT and similar faceplates and surface outlets
- Card stock labels are perforated and compatible with inkjet and laser printers
- Self-adhesive polyester labels are pre-cut and compatible with laser printers
- Labels are supplied on 8.5" x 11" sheets
- For use with:
 - 110Connect Faceplates
 - SL Series Faceplates
 - HIDEAWAY Multimedia Outlet
 - WIREMOLD Raceway Faceplates
 - Universal Office Box, 6-Port
 - Multimedia Security Outlet
 - ACO Faceplates

Description	Label Size (W x H)	Labels per Sheet	Part Number
Card Stock	1.98" x 0.373"	72	1375356-X
Self-adhesive Polyester	1.98" x 0.373"	72	1375357-X

X denotes packaging: -1 = 5 sheets (360 labels) per pack, 5--1 = 100 sheets (7200 labels) per pack

Label Covers for Faceplates



Description		Figure	Part Number
Label Cover	Transparent	A	1375345-1
	Opaque Color	B	1479268-X

X denotes color: -1 = Almond, -2 = Black, -3 = White, -4 = Gray, 1--1 = Electrical Ivory

Product Facts

- Kit includes fifty die-cut labels and clear plastic covers
- For use in SL Series, 110Connect standard and angled, iconable ACO, and WIREMOLD compatible faceplates
- Can be used in place of clear label covers provided with SL Series and Standard and Angled 110Connect Faceplates
- Included with compatible faceplate kits

Universal Labels



Product Facts

- AMP NETCONNECT Labeling Software allows customization of the universal labels listed for use with multiple products
- The Software provides cut lines to modify the labels for each particular application
- Number of labels per package will vary according to individual application

Description	Application	Labels per Sheet	Labels per Package		Part Number
			5 Sheets	100 Sheets	
Self-adhesive Polyester	Modular Jack Box, 1-Port	216	1,080	21,600	1375358-X
	Modular Jack Box, 2-Port	120	600	12,000	
	SL Series Furniture Outlet	72	360	7,200	
	SL Series Faceplate, Double Gang				1375353-X
	110Connect Office Box, 2-Port and 4-Port	144	720	14,400	

X denotes packaging: -1 = 5 sheets per pack, 5--1 = 100 sheets per pack

Labels for Patch Panels



Product Facts

- All labels are designed to fit AMP NETCONNECT Standard and Angled patch panels
- AMPTRAC 6-Pack Patch Panels (Standard or Angled) use part number 1375353 labels only
- Labels are supplied on 8.5" x 11" sheets
- Card stock labels are perforated and compatible with inkjet and laser printers
- Self-adhesive polyester labels are pre-cut and compatible with laser printers
- Special 0.25" high label is provided for use when icons are also desired
- For use with:
 - 110Connect Cat 6 Patch Panels and Mini Patch Panels
 - 110Connect Cat 5e Patch Panels and Mini Patch Panels
 - 110Connect Cat 5 Patch Panels and Mini Patch Panels
 - SL Series Multimedia Patch Panels and Mini Patch Panels

Description	Label Size (W x H)	Labels per Sheet	Labels per Package		Part Number
			5 Sheets	100 Sheets	
Card Stock	3.10" x 0.50"	36	180	3600	1375351-X
Self-adhesive Polyester	3.10" x 0.50"	36	180	3600	1375352-X
	3.30" x 0.25"	72	360	7200	1375353-X

X denotes packaging: -1 = 5 sheets per pack, 5--1 = 100 sheets per pack

Label Covers for Patch Panels

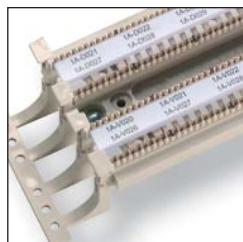
PART NUMBER 1116044-2



Product Facts

- Includes twenty-five sheets, four clear plastic label covers per sheet
- For use with Category 6, 5e, 5 and SL Series Multimedia Patch Panels
- Included with compatible patch panels

Labels for 610XC and 110Connect XC Cross-Connect Wiring Blocks



Product Facts

- Labels are designed to fit the AMP NETCONNECT 610XC and 110Connect XC Cross-connect systems and other similar products (Chapter 1.5)
- Card stock labels: designed to fit into standard clear designation strips, available in TIA/EIA-606-A compliant colors, perforated, and compatible with inkjet and laser printers
- White self-adhesive polyester labels: designed for easy application to the front of the clear designation strips, pre-cut and compatible with laser printers
- Labels are supplied on 8.5" x 11" sheets

Description	Label Size (W x H)	Labels per Sheet	Color	Part Number	
				5 Sheets	100 Sheets
Card Stock	7.90" x 0.48"	18	White	1375354-1	5-1375354-1
			Blue	1375354-2	5-1375354-2
			Green	1375354-3	5-1375354-3
			Purple	1375354-4	5-1375354-4
			Red	1375354-5	5-1375354-5
			Brown	1375354-6	5-1375354-6
			Yellow	1375354-7	5-1375354-7
			Orange	1375354-8	5-1375354-8
			Gray	1375354-9	5-1375354-9
Self-adhesive Polyester	7.90" x 0.48"	18	White	1375355-1*	5-1375355-1*

*Note: Available in white only.

NOTE: 5 Sheets per pack = 90 labels, 100 Sheets per pack = 1800 labels.

Clear Label Holder for 610XC and 110Connect XC Wiring Blocks PART NUMBER 558417-1



Product Facts

- Used with 610XC and 110Connect XC Cross-Connect Systems (Chapter 1.5)

Labels for Cable and Cable Assemblies



Product Facts

- Labels are designed for use on cable and cable assemblies
- Labels are pre-cut and compatible with laser printers

Description	Application	Label Size (W x H)	Labels per Sheet	Labels per Package		Part Number
				5 Sheets	100 Sheets	
Self-adhesive Polyester	4-Pair Cable	0.984" x 1.496"	48	240	4800	1479002-X
	25-Pair Cable	0.984" x 2.480"	24	120	2400	1479003-X

X denotes packaging: -1 = 5 sheets per pack, 5--1 = 100 sheets per pack

Icon Wheels



- For use with:
 - SL Series Modules (Chapter 3)
 - SL Series Furniture Outlets (Chapter 3)
 - SL Series Mounting Straps (Chapter 3)
 - Modular Jack Boxes (Chapter 3)
 - Standard Faceplates (Chapter 3)
 - Universal Office Boxes (Chapter 3)
 - HIDEAWAY Outlet (Chapter 3)
 - HIDEOUT Outlet (Chapter 3)
 - Iconable ACO Faceplates (Chapter 3)
 - FLEX-MODE Electrical Faceplates (Chapter 3)
 - MT-RJ Rack Mount Enclosure (Chapter 2.5)
 - MT-RJ Snap-In Adapter Plate (Chapter 2.2)
 - SL Series Category 5E and 6 Patch Panels (Chapter 1.4)
 - 110Connect Category 5 and 5e
 - Patch Panels (Chapter 1.4)
 - SL Series Multimedia Jack Patch Panels (Chapter 3)
 - Iconable ACO Patch Panels (Chapter 1.4)
 - And other products as listed in each part's Product Facts

Each Wheel Contains:	Base Part Number
4 Data, 4 Blank, 2 Phone, 3 Cat 5, 1 Fax, 1 Modem, 1 Print	558176-X
4 Blank, 2 Cat 5e, 2 Cat 6, 1 each: V1, V2, V3, V4, D1, D2, D3, D4	1375092-X
16 Data	558198-X
16 Phone	558199-X
16 Blank, available in: -1, -6, -8, 1--0 and 1--1 only	558821-X

X denotes color: -1 = Almond, -2 = Red, -3 = Green, -4 = Blue, -5 = Yellow, -6 = Black, -7 = Orange, -8 = White, -9 = Violet, 1--0 = Gray, 1--1 = Electrical Ivory



Notes